

6 REASONS TO GET MAGIC TV™ ONLINE

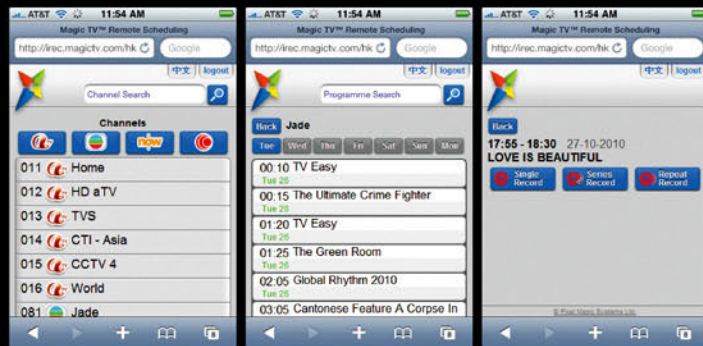
6 大理由將 MAGIC TV™ 連接上網

1 Remote Recording

Set recordings from your browser!

Remote Recording allows you to browse TV listings and set recordings while at work, on your smartphone, or from anywhere with an internet connection and a browser!

<http://irec.magictv.com/hk>



1 網上預約錄影

透過瀏覽器預校錄影

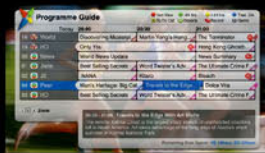
您可以隨時隨地透過手提電話或電腦瀏覽器查看電視節目表及進行預約錄影。

<http://irec.magictv.com/hk>



2 iEPG

Unlock a richer and more colourful Electronic Programme Guide featuring genre icons, genre browsing and increased programme data.*



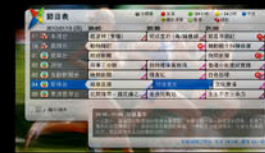
3 Live News, Weather & More

Receive live news, weather and lottery results from the internet direct to the Magic TV™ interface from RTHK, the Hong Kong Observatory and more. View instant news updates with photos from the popular news resource on.cc



2 iEPG

獲得內容豐富、帶有更多功能的電子節目表，如：節目類別圖示、按類別瀏覽及更多資訊。



3 即時新聞、氣象資訊、on.cc 即時圖片新聞

直接從互聯網接收即時新聞和氣象資訊，通過 Magic TV™ 界面瀏覽，資訊來源包括香港電臺，香港天文臺等。您還可以從主流新聞網站 on.cc 查看即時圖文新聞。



4 Series Recording

Additional internet data is used by Magic TV™ to enable reliable episode linking. Now you can select 'Record this series' to record a whole series even if episodes are in different time slots.*

5 Rescheduling

Additional internet data is used to detect if the schedule for a programme in the To Do List changes. Recording times are automatically changed to match!*

6 Updates

Magic TV™ lets you know when a new firmware version is available and you can download and update directly! No need for a computer or USD disks!

4 系列錄影

自動為您將整套劇集錄起，即使每一集的開始時間不同，您也可以選擇“系列錄影”完整地將全套劇集錄影下來。

5 節目追蹤

透過互聯網得到資訊更新並會對預約錄影清單中的節目進行檢測，如果節目時間有所調動，錄影時間亦會自動匹配。

6 軟件升級

Magic TV™ 可以透過網絡偵測到最新軟件版本，毋須使用電腦或 USB 硬盤已能直接升級。

Get connected now! See inside for instructions

立即連線! 請參考內頁之安裝說明

*Every effort is made to ensure the accuracy of iEPG data; however, Pixel Magic does not guarantee the accuracy or reliability of information supplied by broadcasters.

*我們竭盡全力，希望提供準確的增強電子節目表 iEPG 資訊。但是，視科系統不能保證廣播電視公司提供資訊的準確性和可靠性。

HOW TO GET ON THE INTERNET

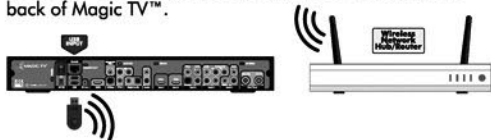
1. You will need:

- a Local Network with Hub/Router connected to the internet.
- b Either a Wireless Hub/Router and a Magic TV™ supported Wi-Fi Adapter, or a wired network and Cat5 network cable.

2a. For Wireless Installation:

a Ensure that your Wireless Hub/Router is set up to allow wireless connections and is placed within approx 20 metres of Magic TV™. Note that this range may be reduced significantly by walls, floors and other obstructions.

b With Magic TV™ turned off, connect a Magic TV™ supported Wi-Fi Adapter to an empty USB socket on the back of Magic TV™.



c Turn on Magic TV™.

d Press the Magic TV™ button on the remote control and navigate to Settings→System→Network→Wireless Networks.

e Magic TV™ will automatically search for any available wireless networks and present a list of them and their corresponding signal strengths.



f After selecting a wireless network, you are asked to enter a passphrase for that network. Do this using the alphanumeric keys on the remote control. Press multiple times to cycle through the characters available on any individual key.

2b. For Wired Installation:

a Connect a Cat5 network cable between the Ethernet Network socket on the back of Magic TV™ and your network Hub/Router.



3. Getting IP information:

a On Magic TV™ navigate to Settings→System→Network→Get IP Address from DHCP Server.

b Magic TV™ will start searching for the IP information. When found, a confirmation message will appear. Select 'Save and exit' to finish this process.

4. Finish!

Congratulations! You can now enjoy extra features from Magic TV™.

If you experience problems or wish to enter IP information manually, please refer to your full Magic TV™ Owner's Guide.

HOW TO USE REMOTE RECORDING

Remote Recording allows you to browse TV listings and set recordings while at work, on your smartphone, or from anywhere with an internet connection and a browser!

Registering is easy:

- a On Magic TV™ navigate to Main Menu→Settings→System→Advanced Settings→Remote Scheduling Registration.
- b Enter your mobile phone number and your chosen password.
- c If you are using a PCCW mobile service, an SMS text message will be sent directly to your mobile phone containing a Confirmation Key. Enter this Confirmation Key into the same Magic TV™ menu.
- d Now you can visit <http://irec.magictv.com/hk/> to start recording.

On the Remote Recording website you can browse the next 7 days of programmes, perform searches and set Single, Series or Repeat recordings!



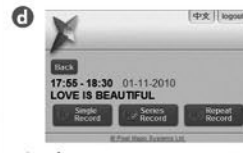
Log in using your mobile phone number and your chosen password.



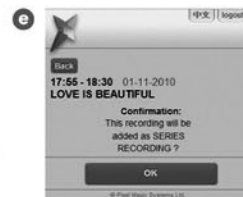
Click on a channel to reveal programme listings. The four buttons at the top let you quickly jump to a chosen broadcaster.



The website automatically jumps you to the current time (shown in blue) or, if you prefer, you can scroll to the top and press buttons to jump to a specific day.



On the programme page, you'll see programme information and any available recording options. Press one of the options to make a recording. Note that not all programmes have series data.



Press 'ok' to confirm your recording choice and the website will automatically connect with your Magic TV™ over the internet to set the recording.

The recording will be added to your Magic TV™ To Do List just like a recording made at home and can be changed and deleted in the usual way.

如何連線到互聯網

1. 您需要：

- a 網路路由器並連接上網。
- b 無線網路路由器及 Magic TV™ 支援的 USB 無線手指或五類網線。

2a. 無線連接

a 請確保您的無線網路路由器支援無線連接並處於 Magic TV™ 20 米範圍內，如有牆壁、地面或其他阻礙物，此距離有可能需要減少。

b 將 Magic TV™ 關掉，然後將 USB 無線手指插入 Magic TV™ 機背的 USB 槽。



c 啟動 Magic TV™。

d 按 Magic TV™ 遙控器的 鍵進入設定 → 系統 → 網絡 → 無線網絡。

e Magic TV™ 會自動搜索所有可用的無線網絡並列出各訊號強度。



f 選擇使用的無線網絡，然後使用遙控器的數字鍵輸入密碼。

2b. 有線連接：

a 用一條五類網線連接 Magic TV™ 到您的寬頻路由器。



3. 從 DHCP 伺服器獲得 IP 資訊：

a 按 Magic TV™ 遙控器 鍵進入主目錄，選擇設定 → 系統 → 網絡 → 由 DHCP 伺服器獲得 IP 地址。

b Magic TV™ 將開始搜索 IP 資訊。如果搜索到相關資訊，將會出現一條提示，此時選擇“保存並退出”結束 IP 資訊獲得過程。

4. 完成

恭喜！您現在可開始享用 Magic TV™ 的額外功能。

若您想為 Magic TV™ 指定一個特定的 IP 地址或遇到任何問題，請參考使用手冊 9.1 節。

如何使用網上預約錄影

無論您在哪裡，都可以瀏覽電視節目表及預約錄影。你可以直接從互聯網網址上預約 Magic TV™ 錄影節目，因此即使上班或在外，只要手機可上網或在任何能上網及有瀏覽器的地方便能預校家中的 Magic TV™ 錄影。

簡易註冊

- a 按 Magic TV™ 遙控器 鍵進入主目錄，選擇設定 → 系統 → 進階設定 → 遙距錄影註冊。
- b 輸入手提電話號碼及設定密碼，然後選擇“保存並退出”。
- c 如果你是使用 PCCW 的手提電話號碼，系統會經由 SMS 發送一個認證碼到你的手提電話，請在 Magic TV™ 上輸入認證碼，完成註冊。
- d 現在您可到 <http://irec.magictv.com/hk/> 進行預約錄影。

在預約錄影的網站，您可瀏覽未來 7 天之電視節目，觀看節目資訊，及設定單一、重複或系列錄影。



到網址輸入您在 Magic TV™ 註冊的手提電話號碼及密碼登入。



使用上方的四大台徽跳到該廣播公司之頻道。選擇頻道後，該頻道未來七天之節目將列出



網頁會自動跳到當前播映的節目並以藍色高亮顯示該時間及日期。您亦可捲至頁頂來跳至某一日。



選擇所需錄影的節目後，您可看到該節目資訊及所有可供選擇之錄影模式。按下您所需的錄影模式。注意：不是所有節目均提供系列錄影。



選擇所需錄影的節目後按“確認”，網址會自動將資料傳到您家中的 Magic TV™ 進行預約錄影。

錄影指令將被加入您的 Magic TV™ “預約錄影清單”內，您可如常地取消或更改錄影項目。